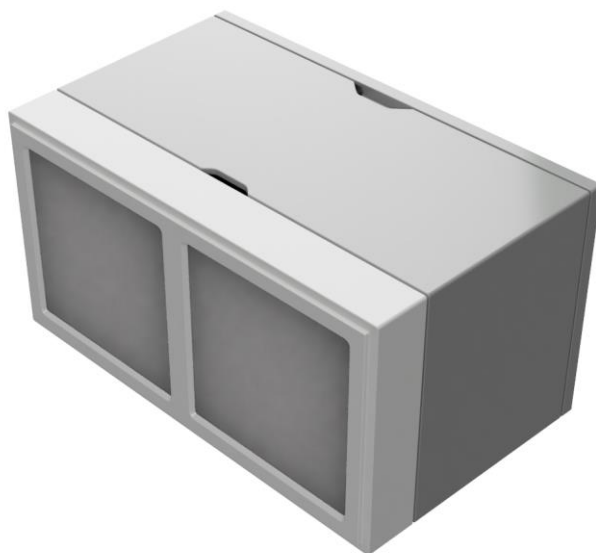


Installation instruction

Trisensor



The Mymesh Trisensor is a product in the Chess program for building light control. The Trisensor is a wireless sensor for smart building applications supporting measurement of the room temperature, relative humidity, occupancy (number of persons), light level, motion detection and Bluetooth beaconing for location based services. The available sensors allow usage for wireless light and HVAC applications in e.g. climate ceilings. The Trisensor is powered by a mains voltage connection.

Safety



- Installation and service should be performed by qualified personnel only.
- The electrical installation must be in conformance with the national legislation and relevant standards.
- Do not use the Trisensor if it is damaged.
- Do not clean the Trisensor with any soap and/or cloth.

Application

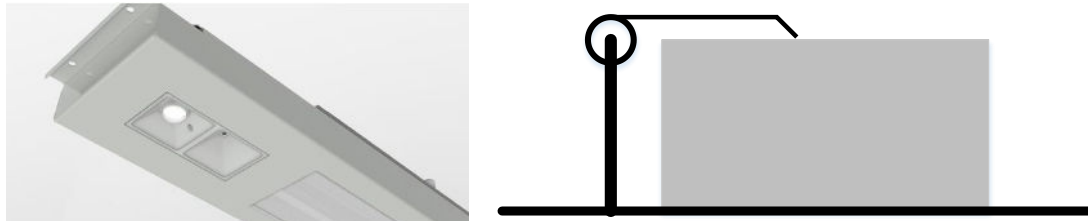
Refer to the Trisensor product sheet (see chess.nl) for the environmental conditions.

Location

Locate the Trisensor in the direct neighbourhood of other Mymesh products. Mount the Trisensor in the ceiling above the desired detection zone. Use multiple Trisensors for larger areas. Refer to the product sheet for sensor specifications.

Installation

The Trisensor is designed for flush mounting in a rectangular hole of 42 x 82 mm next to a Luminaire. A raised edge at the front ensures correct positioning. The Trisensor is locked using a spring clip.



- **Do not touch the foil at the front of the Trisensor to prevent damage.**
- Mount the Trisensor (from the rear side) into the rectangular hole next to the luminaire.
- Ensure that the front is flush mounted
- Lock the Trisensor using a spring clip.
- Connect the mains cable to the WAGO Winsta distribution connector of the luminaire.
- After powerup the red LED should lit up when motion is detected by the PIR sensor.

Configuration

Use the iPad Mymesh commission app for configuration of the Trisensor.

Usage

The Trisensor will control the lighting and or HVAC in the configured zone/room.

Compliance



This product complies with the European directives and relevant standards for RED, REACH and RoHS. The Trisensor contains a 2.4 GHz radio. The applied frequency of the radio is within the band 2.401 – 2.482 GHz and the maximum transmit power is +4 dBm.

Hereby, Chess Wise B.V. declares that the radio equipment type Trisensor is in compliance with Directive 2014/53/EU. The full text of the EU declaration of conformity is available at chess.nl.

Repair

Do not open this product. In case of failure the Trisensor must be replaced.

Recycling



Do not dispose this product as household waste, but bring it to an appropriate collection point for recycling.