

## Installation instruction

# 4" Touch panel




For rooms/areas that require centralized control of lighting, climate and/or blinds (e.g. Meeting Rooms, Classrooms etc.) Mymesh offers a 4" Touch Panel as a solution. The 4" touch panel is a third party smart touch panel (manufactured by Portworld), configured and personalized to change setpoints in Mymesh networks. For this, the 4" Touch panel uses Bluetooth Beacons from the Mymesh network and internet.

The internet connection can be achieved by an Ethernet cable or WiFi. Power can be supplied via a mains connection or Power over Ethernet. The 4" Touch panel needs data connections with Mymesh cloud servers for software updates, access and control. The 4" Touch panel is **always** the initiator for these connections.

Rooms/areas can be configured for centralized control by the 4" Touch panel only or combined with a Mymesh Control App on a smartphone.

### Safety

-  Installation and service should be performed by qualified personnel only.
- The electrical installation must be in conformance with the national legislation and relevant standards.
- The mains connection of the 4" Touch panel must be provided with a fuse or circuit breaker.
- Disconnect power at the source before installation, inspection or removal
- Do not use the 4" Touch panel if it is damaged.
- The 4" Touch panel is suitable for use at indoor locations (IP20 protection class).
- The 4" Touch panel is double insulated (protection class II).

## Application

Read the 4" Touch panel product sheet (see mymesh.nl) for the environmental conditions.

## Connection requirements

Following conditions are required to allow a 4" Touch panel to connect to the Mymesh servers:

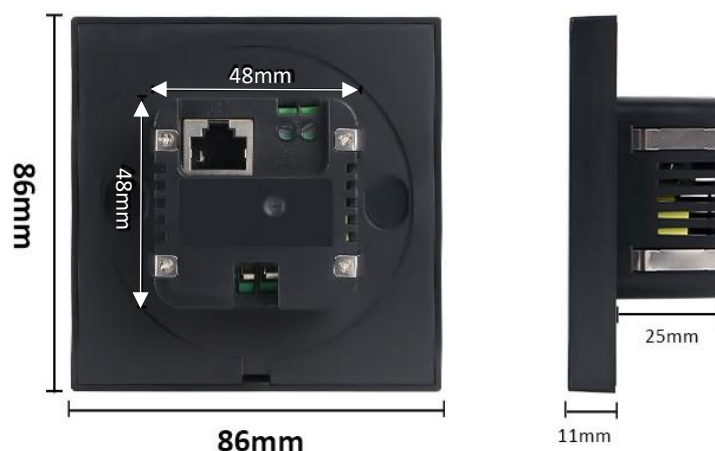
1. The 4" Touch panel must be able to join a local Ethernet network. It does not support any port based access control like for example IEEE 802.1x.
2. The 4" Touch panel should be able to obtain an IP address using DHCP.
3. The 4" Touch panel should be able to obtain a gateway address using DHCP.
4. The 4" Touch panel should be able to query a DNS resolver in order to find the IP address of the Mymesh server. The IP address of this resolver must be provided by the DHCP server. The DNS queries will target UDP/TCP port 53.
5. The 4" Touch panel should be able to query a NTP server on UDP/TCP port 123.
6. Internet access should not be restricted by a (non-transparent) proxy-server. The 4" Touch panel does **not** support this.
7. The 4" Touch panel should be able to connect to the Mymesh server on TCP port 8000.
8. On a firewall, do **not** enable Deep Packet Inspection (DPI) for the connection to the Mymesh servers (TCP port 8000). This connection does **not** make use of the HTTP protocol. The 4" Touch panel and the Mymesh servers use a proprietary secure link protocol to communicate (see below).

## Security

Directly after power-up, the 4" Touch panel will try to setup an outgoing TCP connection on port 443 to a Mymesh software update server. The (possible) software update **only** concerns the 4" Touch panel.

Next, the 4" Touch panel connects with a Mymesh server over TCP port 8000. There is no need to route the connection over VPN or VLAN. The data traffic between the 4" Touch panel and Mymesh server is end-to-end encrypted and authenticated using 128 bit AES-CCM encryption.

## Dimensions



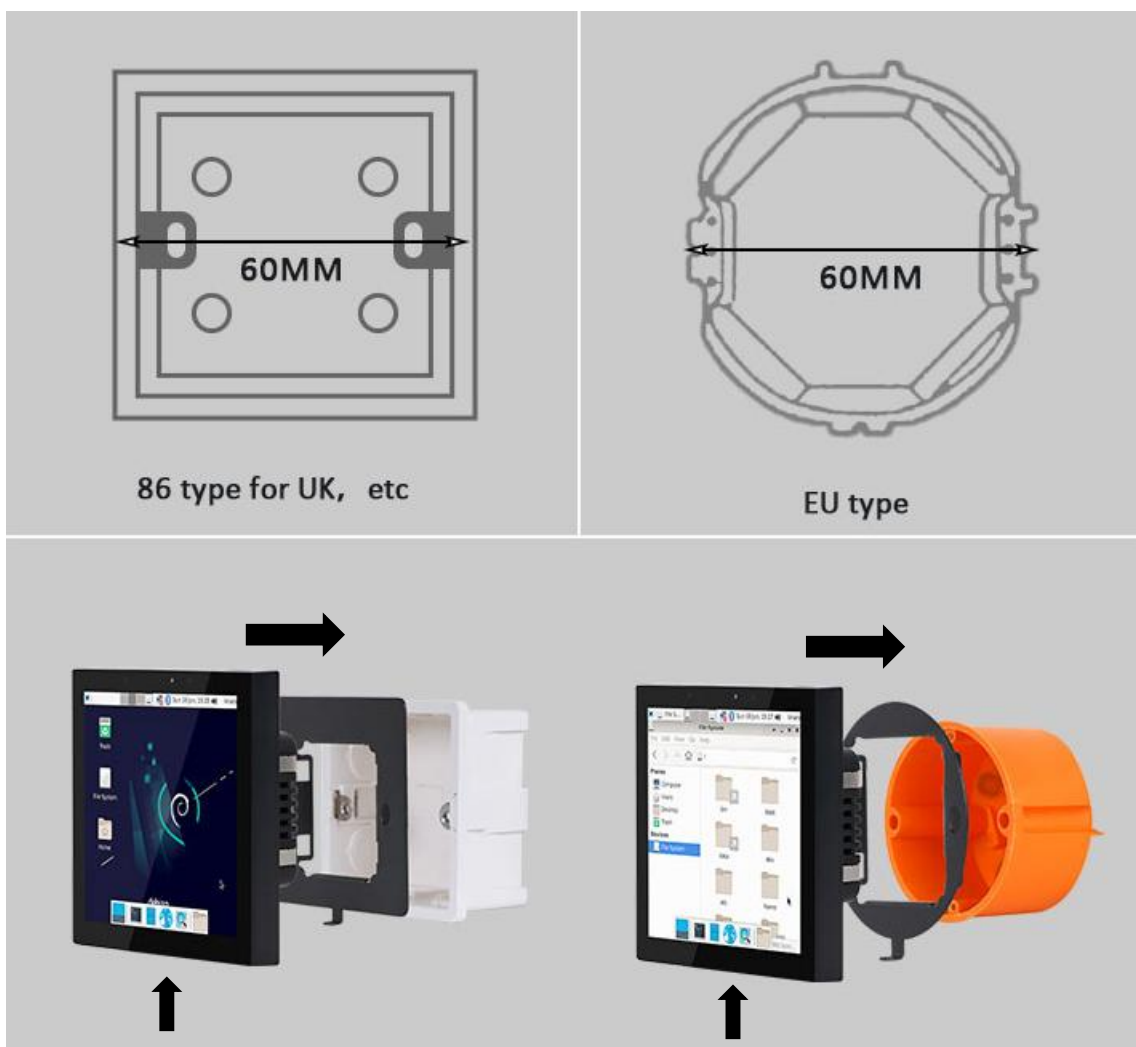
## Location

The 4" Touch panel must be installed **in the room**, which needs to be controlled. In this room Mymesh devices need to be installed.

## Mounting

Mount the 4" Touch panel into a standard EU or UK wall box using the supplied adapter plate:

- Mount the adapter plate to the wall box
- Connect the cabling (see wiring)
- Push the 4" Touch panel into the adapter plate until it locks. **Make sure it is positioned correctly (locking hole bottom side)**
- Lock the 4" Touch panel to the adapter plate using the supplied screw.



## Wiring

- Connect Ethernet to the RJ45 connector or use Wifi.
- Connect 230VAC to the mains terminal or use Power Over Ethernet

See wiring diagram below.



## Dismounting

The 4" Touch panel is locked to the adapter plate with a screw and four spring blades. For dismounting first remove the **lock screw** (bottom side). Next push a thin screw driver into one of the spring blades and pull the 4" Touch panel away from the adapter plate. Repeat this step on the other 3 blades until the panel can be removed.



## **Configuration**

To be written

## **Usage**

The 4" Touch panel will control the selected room.

## **Conformity**

The 4" Touch panel complies with the European directives and relevant standards for RED, REACH and RoHS. The full text of the declaration of conformity from the manufacturer Portworld is available at Mymesh.nl..

## **Repair**

Do not open this product. In case of failure the 4" Touch panel must be replaced.

## **Recycling**

Do not dispose this product as household waste, but bring it to an appropriate collection point for recycling.

